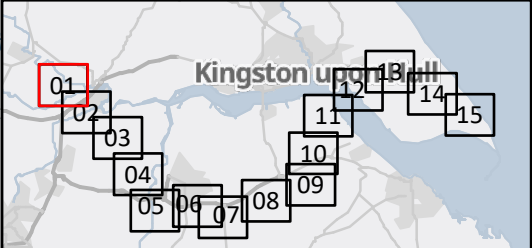


- Proposed Order Limits
- Study Area (500m)
- Historical Railways
- Historical Railway Features LD GS
- Historical Railway Features HD GS
- Historical Energy Feature GS
- Historical Industrial Land uses GS
- Historical Tanks GS

Notes:
Service Layer Credits: GB Background: Contains OS data © Crown Copyright and database right 2022
Contains data from OS Zoomstack



01	16/08/22	INITIAL ISSUE	KF	ER	KS
Rev	Date	Description	Drawn	Check	Approv

Client:

nationalgrid ventures

PROJECT:
HUMBER LOW CARBON PIPELINES

Site
Humber

Client
National Grid plc,
1-3 Strand,
London,
WC2N 5EH United Kingdom
Registered in England and Wales
No. 4031152
nationalgrid.com

Registered office:
80Fen
80 Fenchurch Street
London
EC3M 4BY

Coordinating Office:
Suite 1A
4 Piccadilly Place
Manchester
M1 3BN

www.arcadis.com

Title:

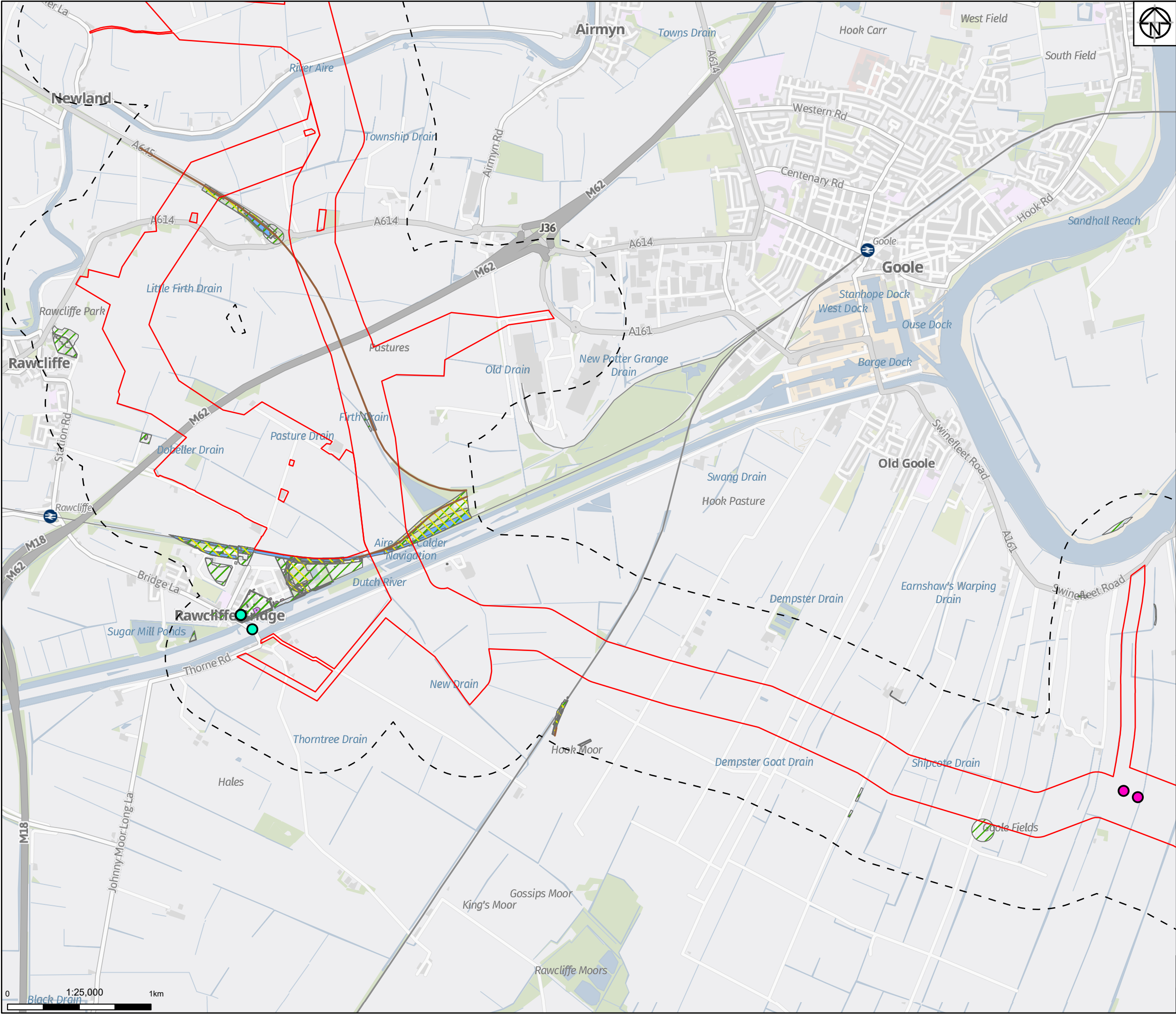
Figure 9.6
Historically Potentially
Contaminative Land Uses
Page 1 of 15

Designed	E. Richardson	Date	16 AUG 22	Signed	
Drawn	K. Fischer	Date	16 AUG 22	Signed	
Checked	E. Richardson	Date	16 AUG 22	Signed	
Approved	K. Stubbs	Date	16 AUG 22	Signed	
Scale:	1:25,000	Datum:			AOD
Original Size:	A3	Grid:			OS
Suitability Code:	S2	Project Number:			10047064

Suitability Description:

For Information

Drawing Number:	10047064-ARC-EGT-ZZ-DR-00044-S2	Revision:	P01
-----------------	---------------------------------	-----------	-----



Proposed Order Limits

Study Area (500m)

Brit Pits

Historical Licensed Industrial Activities

Historical Railways

Historical Railway Features LD GS

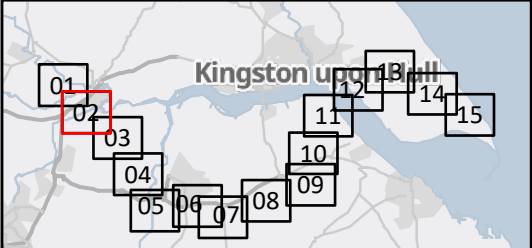
Historical Railway Features HD GS

Historical Energy Feature GS

Historical Industrial Land uses GS

Historical Tanks GS

Notes:
Service Layer Credits: GB Background: Contains OS data © Crown Copyright and database right 2022
Contains data from OS Zoomstack



01	16/08/22	INITIAL ISSUE	KF	ER	KS
Rev	Date	Description	Drawn	Check	Approv

Client:

PROJECT:
**HUMBER LOW
CARBON PIPELINES**

Site
Humber

Client
National Grid plc,
1-3 Strand,
London:
WC2N 5EH United Kingdom
Registered in England and Wales
No. 4031152
nationalgrid.com

Registered office:
80Fen
80 Fenchurch Street
London
EC3M 4BY
www.arcadis.com

Coordinating Office:
Suite 1A
4 Piccadilly Place
Manchester
M1 3BN

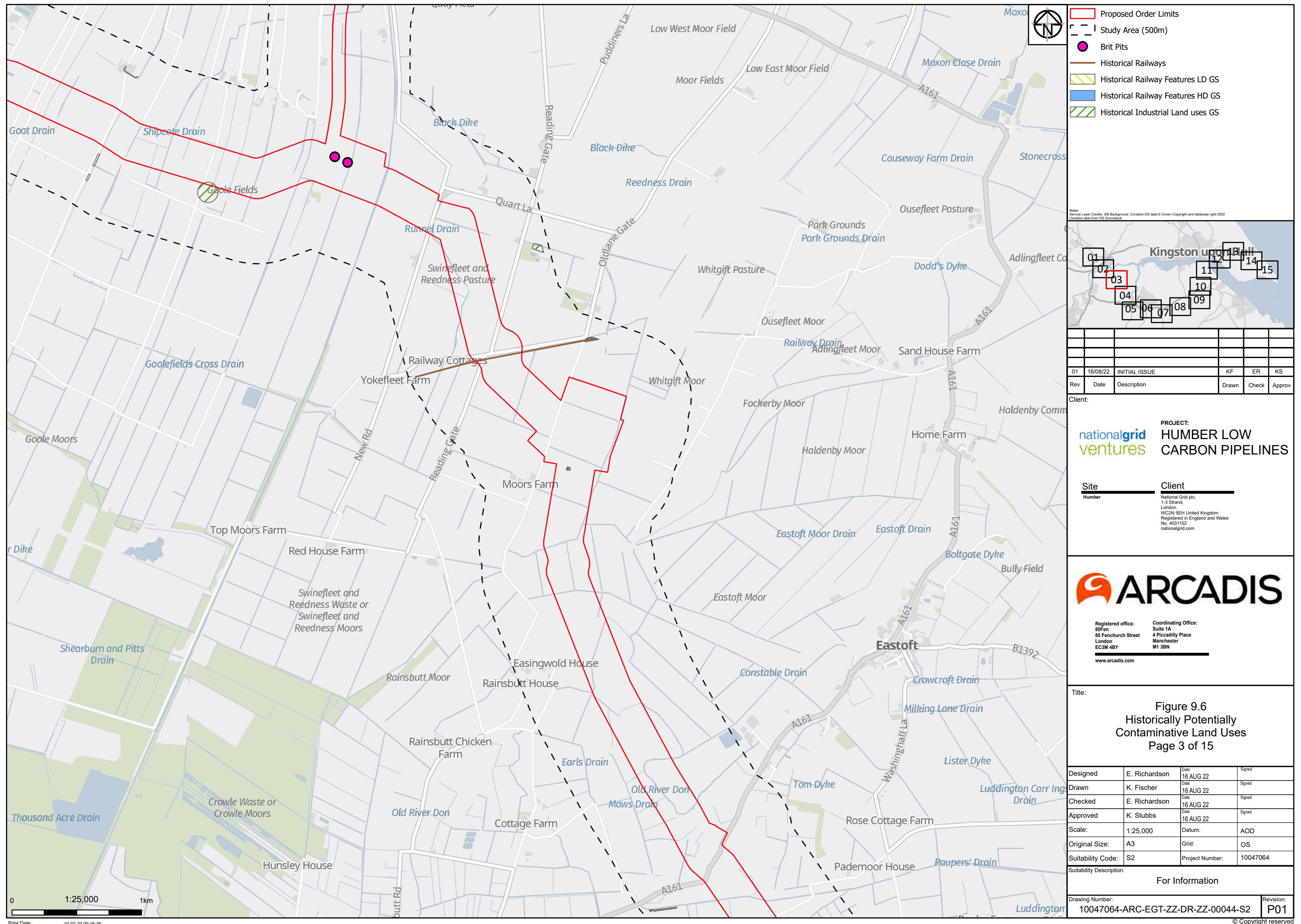
Title:
**Figure 9.6
Historically Potentially
Contaminative Land Uses
Page 2 of 15**

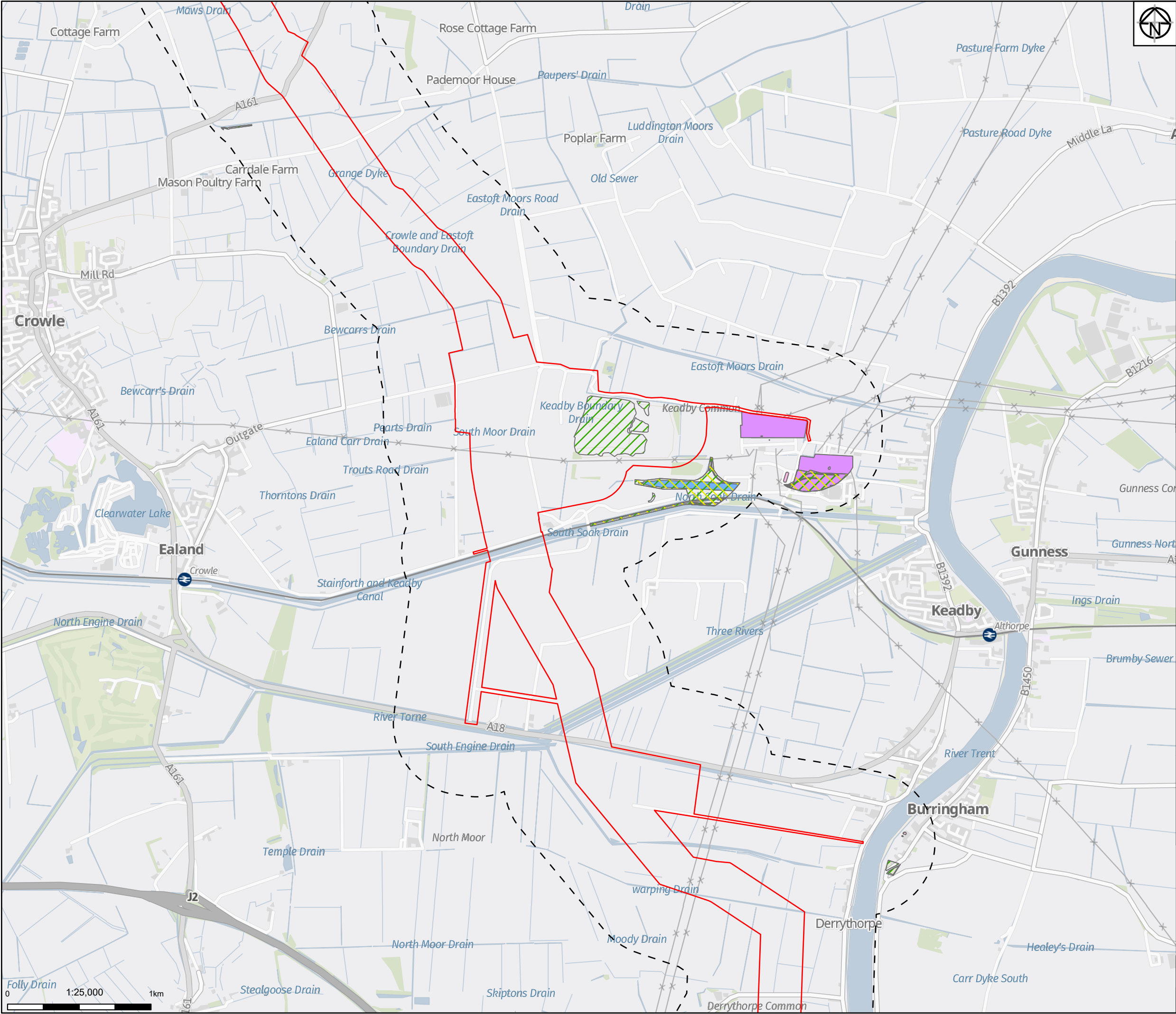
Designed	E. Richardson	Date 16 AUG 22	Signed
Drawn	K. Fischer	Date 16 AUG 22	Signed
Checked	E. Richardson	Date 16 AUG 22	Signed
Approved	K. Stubbs	Date 16 AUG 22	Signed
Scale:	1:25,000	Datum:	AOD
Original Size:	A3	Grid:	OS
Suitability Code:	S2	Project Number:	10047064

Suitability Description:
For Information

Drawing Number:
10047064-ARC-EGT-ZZ-DR-ZZ-00044-S2

Revision:
P01





Proposed Order Limits

Study Area (500m)

Historical Railway Features LD GS

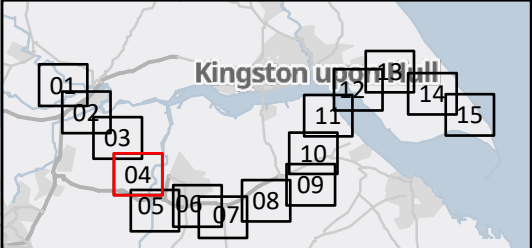
Historical Railway Features HD GS

Historical Energy Feature GS

Historical Industrial Land uses GS

Historical Tanks GS

Notes:
Service Layer Credits: GB Background: Contains OS data © Crown Copyright and database right 2022
Contains data from OS Zoomstack



01	16/08/22	INITIAL ISSUE	KF	ER	KS
Rev	Date	Description	Drawn	Check	Approv

Client:

PROJECT:
**HUMBER LOW
CARBON PIPELINES**

Site

Humber

Client

National Grid plc,
1-3 Strand,
London,
WC2N 5EH United Kingdom
Registered in England and Wales
No. 4031152
nationalgrid.com

Registered office:
80Fen
80 Fenchurch Street
London
EC3M 4BY

Coordinating Office:
Suite 1A
4 Piccadilly Place
Manchester
M1 3BN

www.arcadis.com

Title:

Figure 9.6
Historically Potentially
Contaminative Land Uses
Page 4 of 15

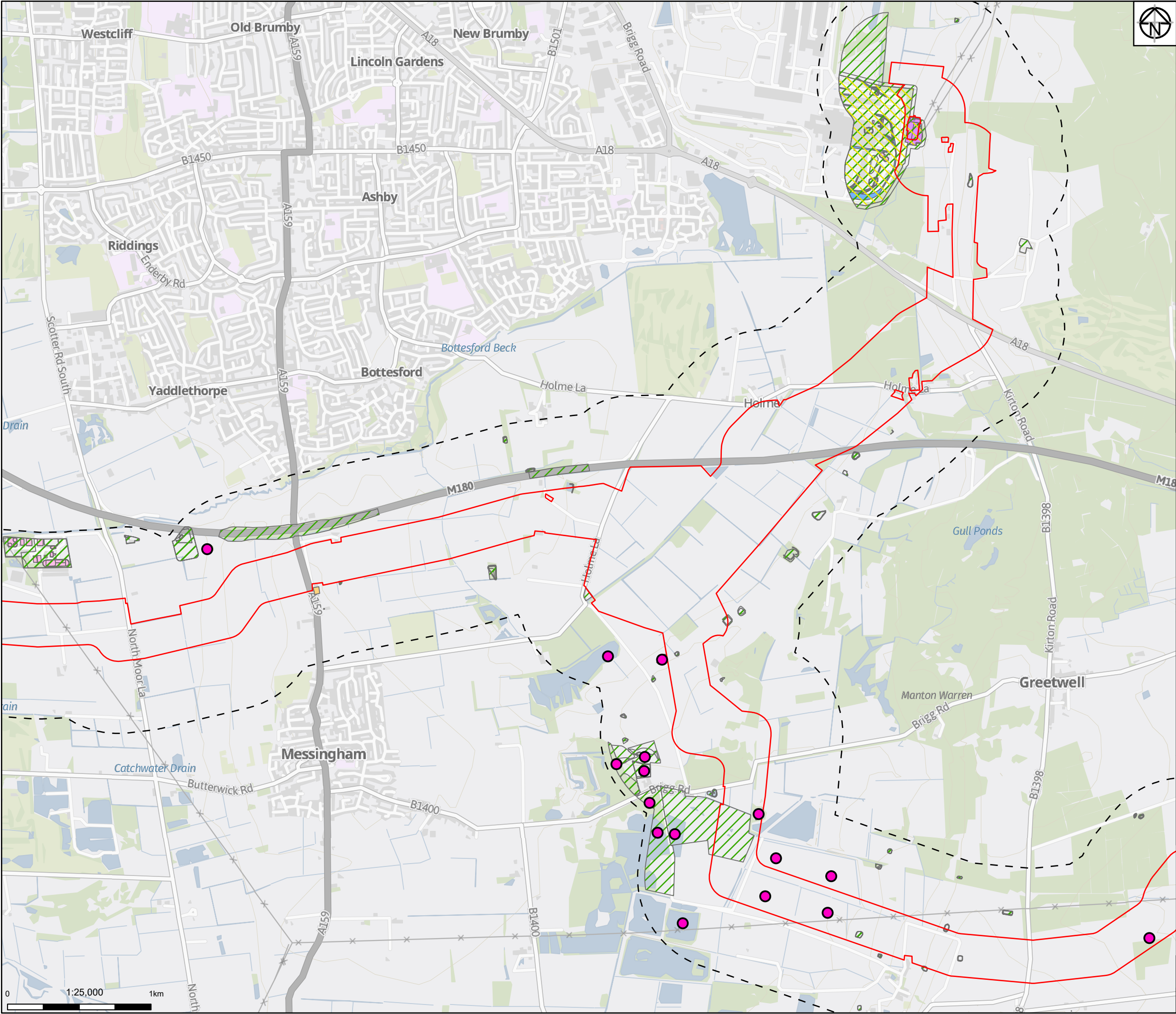
Designed	E. Richardson	Date	16 AUG 22	Signed	
Drawn	K. Fischer	Date	16 AUG 22	Signed	
Checked	E. Richardson	Date	16 AUG 22	Signed	
Approved	K. Stubbs	Date	16 AUG 22	Signed	
Scale:	1:25,000	Datum:		AOD	
Original Size:	A3	Grid:		OS	
Suitability Code:	S2	Project Number:		10047064	

Suitability Description:

For Information

Drawing Number:
10047064-ARC-EGT-ZZ-DR-ZZ-00044-S2

Revision:
P01



Proposed Order Limits

Study Area (500m)

Brit Pits

Historical Railway Features LD GS

Historical Railway Features HD GS

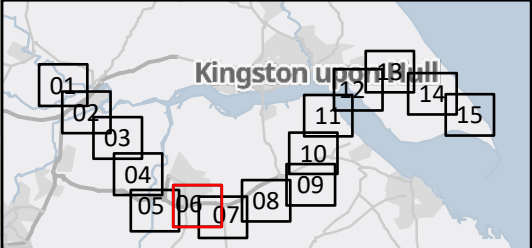
Historical Petrol Stations GS

Historical Energy Feature GS

Historical Industrial Land uses GS

Historical Tanks GS

Notes:
Service Layer Credits: GB Background: Contains OS data © Crown Copyright and database right 2022
Contains data from OS Zoomstack



01	16/08/22	INITIAL ISSUE	KF	ER	KS
Rev	Date	Description	Drawn	Check	Approv

Client:

PROJECT:
**HUMBER LOW
CARBON PIPELINES**

Site
Humber

Client
National Grid plc,
1-3 Strand,
London:
WC2N 5EH United Kingdom
Registered in England and Wales
No. 4031152
nationalgrid.com

Registered office:
80Fen
80 Fenchurch Street
London
EC3M 4BY
www.arcadis.com

Coordinating Office:
Suite 1A
4 Piccadilly Place
Manchester
M1 3BN

Title:

**Figure 9.6
Historically Potentially
Contaminative Land Uses
Page 6 of 15**

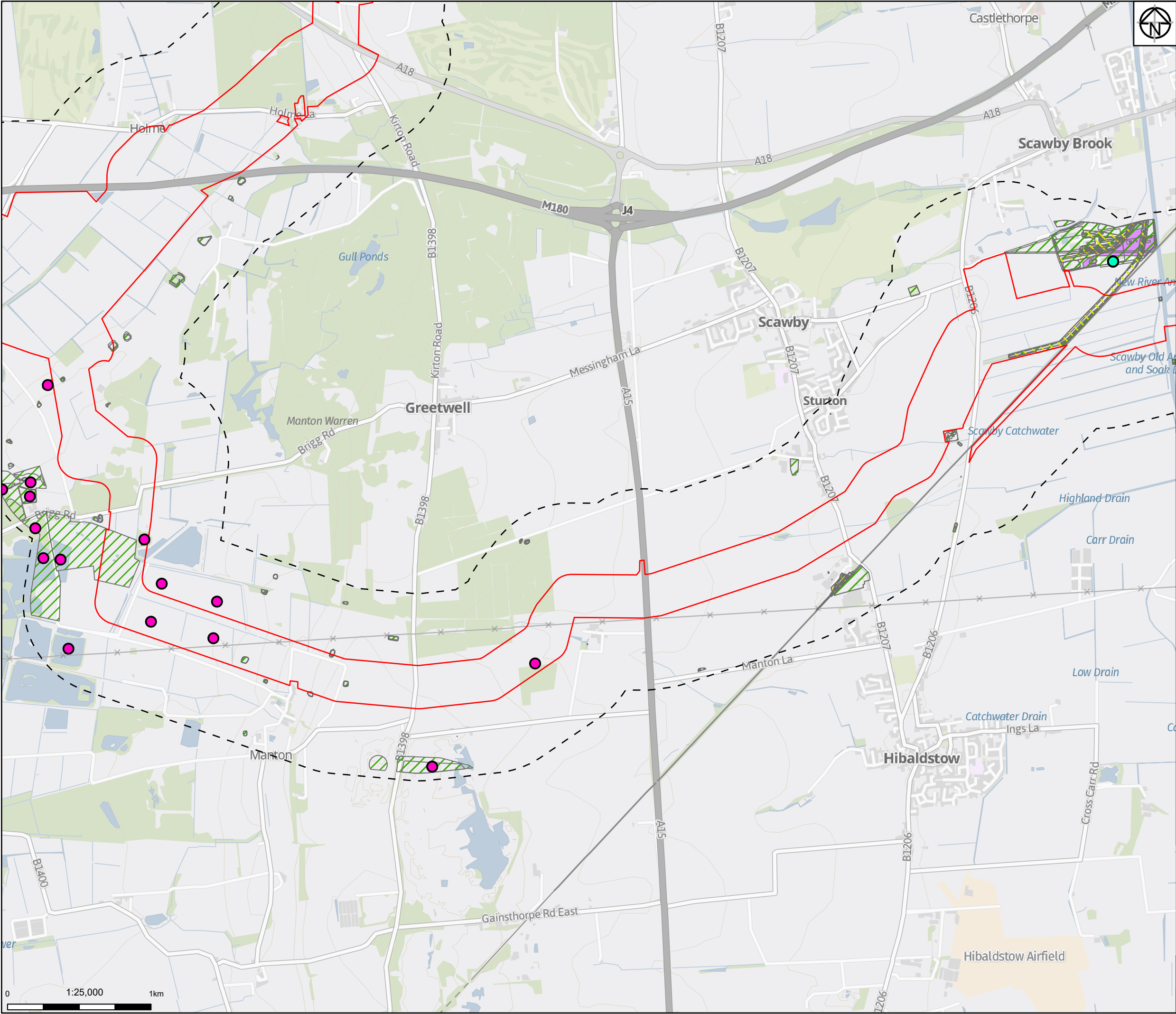
Designed	E. Richardson	Date 16 AUG 22	Signed
Drawn	K. Fischer	Date 16 AUG 22	Signed
Checked	E. Richardson	Date 16 AUG 22	Signed
Approved	K. Stubbs	Date 16 AUG 22	Signed
Scale:	1:25,000	Datum:	AOD
Original Size:	A3	Grid:	OS
Suitability Code:	S2	Project Number:	10047064

Suitability Description:

For Information

Drawing Number:
10047064-ARC-EGT-ZZ-DR-ZZ-00044-S2

Revision:
P01



Proposed Order Limits

Study Area (500m)

Brit Pits

Historical Licensed Industrial Activities

Historical Railway Features LD GS

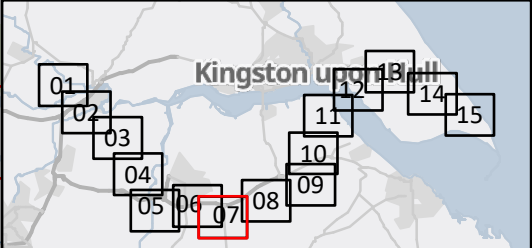
Historical Railway Features HD GS

Historical Energy Feature GS

Historical Industrial Land uses GS

Historical Tanks GS

Notes:
Service Layer Credits: GB Background: Contains OS data © Crown Copyright and database right 2022
Contains data from OS Zoomstack



01	16/08/22	INITIAL ISSUE	KF	ER	KS
Rev	Date	Description	Drawn	Check	Approv

Client:

PROJECT:
**HUMBER LOW
CARBON PIPELINES**

Site
Humber

Client
National Grid plc,
1-3 Strand,
London:
WC2N 5EH United Kingdom
Registered in England and Wales
No. 4031152
nationalgrid.com

Registered office:
80Fen
80 Fenchurch Street
London
EC3M 4BY

Coordinating Office:
Suite 1A
4 Piccadilly Place
Manchester
M1 3BN

www.arcadis.com

Title:

Figure 9.6
Historically Potentially
Contaminative Land Uses
Page 7 of 15

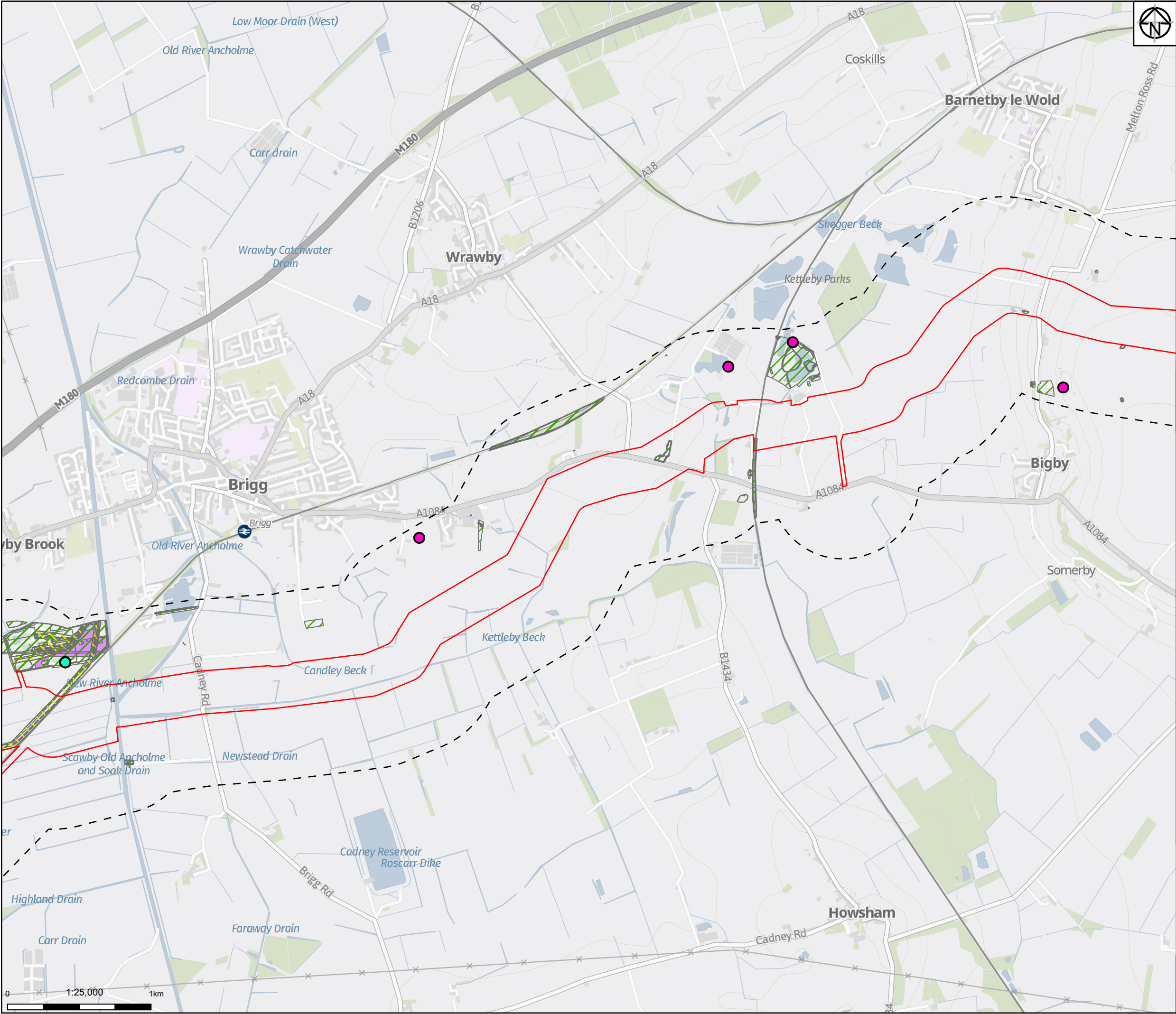
Designed	E. Richardson	Date 16 AUG 22	Signed
Drawn	K. Fischer	Date 16 AUG 22	Signed
Checked	E. Richardson	Date 16 AUG 22	Signed
Approved	K. Stubbs	Date 16 AUG 22	Signed
Scale:	1:25,000	Datum:	AOD
Original Size:	A3	Grid:	OS
Suitability Code:	S2	Project Number:	10047064

Suitability Description:

For Information

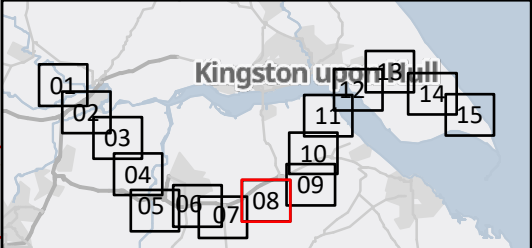
Drawing Number:
10047064-ARC-EGT-ZZ-DR-ZZ-00044-S2

Revision:
P01



- Proposed Order Limits
- Study Area (500m)
- Brit Pits
- Historical Licensed Industrial Activities
- Historical Railway Features LD GS
- Historical Railway Features HD GS
- Historical Energy Feature GS
- Historical Industrial Land uses GS
- Historical Tanks GS

Notes:
Service Layer Credits: GB Background: Contains OS data © Crown Copyright and database right 2022
Contains data from OS Zoomstack



01	16/08/22	INITIAL ISSUE	KF	ER	KS
Rev	Date	Description	Drawn	Check	Approv

Client:

PROJECT:
HUMBER LOW CARBON PIPELINES

Site
Humber

Client
National Grid plc,
1-3 Strand,
London:
WC2N 5EH United Kingdom
Registered in England and Wales
No. 4031152
nationalgrid.com

Registered office:
80Fen
80 Fenchurch Street
London
EC3M 4BY

Coordinating Office:
Suite 1A
4 Piccadilly Place
Manchester
M1 3BN

www.arcadis.com

Title:

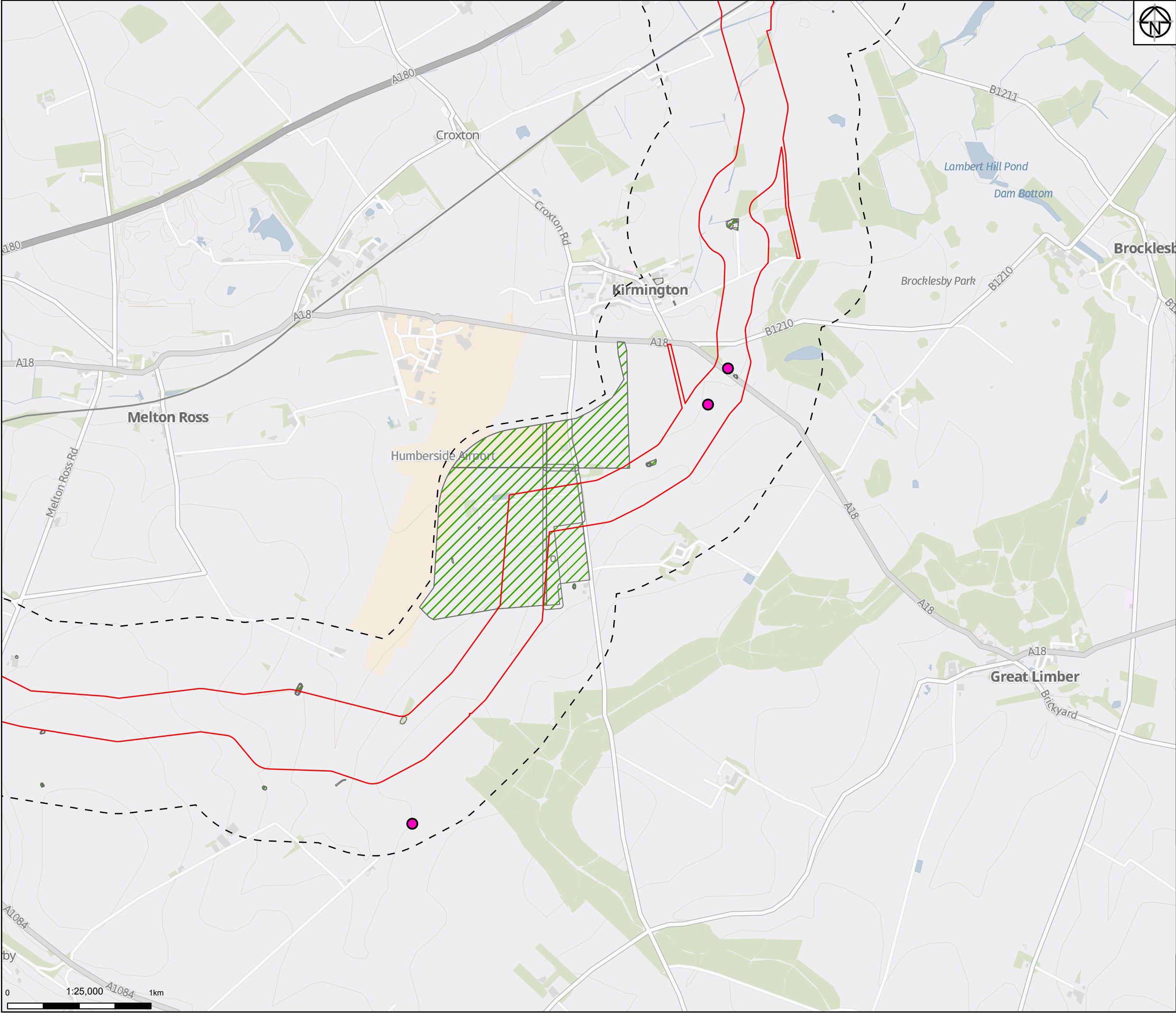
Figure 9.6
Historically Potentially
Contaminative Land Uses
Page 8 of 15

Designed	E. Richardson	Date 16 AUG 22	Signed
Drawn	K. Fischer	Date 16 AUG 22	Signed
Checked	E. Richardson	Date 16 AUG 22	Signed
Approved	K. Stubbs	Date 16 AUG 22	Signed
Scale:	1:25,000	Datum:	AOD
Original Size:	A3	Grid:	OS
Suitability Code:	S2	Project Number:	10047064

Suitability Description:

For Information

Drawing Number: 10047064-ARC-EGT-ZZ-DR-ZZ-00044-S2	Revision: P01
---	-------------------------



Proposed Order Limits

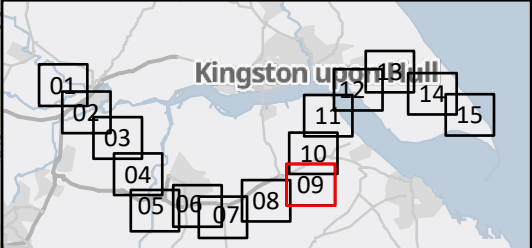
Study Area (500m)

Brit Pits

Historical Industrial Land uses GS

Historical Tanks GS

Notes:
Service Layer Credits: GB Background: Contains OS data © Crown Copyright and database right 2022
Contains data from OS Zoomstack



01	16/08/22	INITIAL ISSUE	KF	ER	KS
Rev	Date	Description	Drawn	Check	Approv

Client:

PROJECT:
**HUMBER LOW
CARBON PIPELINES**

Site
Humber

Client
National Grid plc,
1-3 Strand,
London:
WC2N 5EH United Kingdom
Registered in England and Wales
No. 4031152
nationalgrid.com

Registered office:
80Fen
80 Fenchurch Street
London
EC3M 4BY
www.arcadis.com

Coordinating Office:
Suite 1A
4 Piccadilly Place
Manchester
M1 3BN

Title:

Figure 9.6
Historically Potentially
Contaminative Land Uses
Page 9 of 15

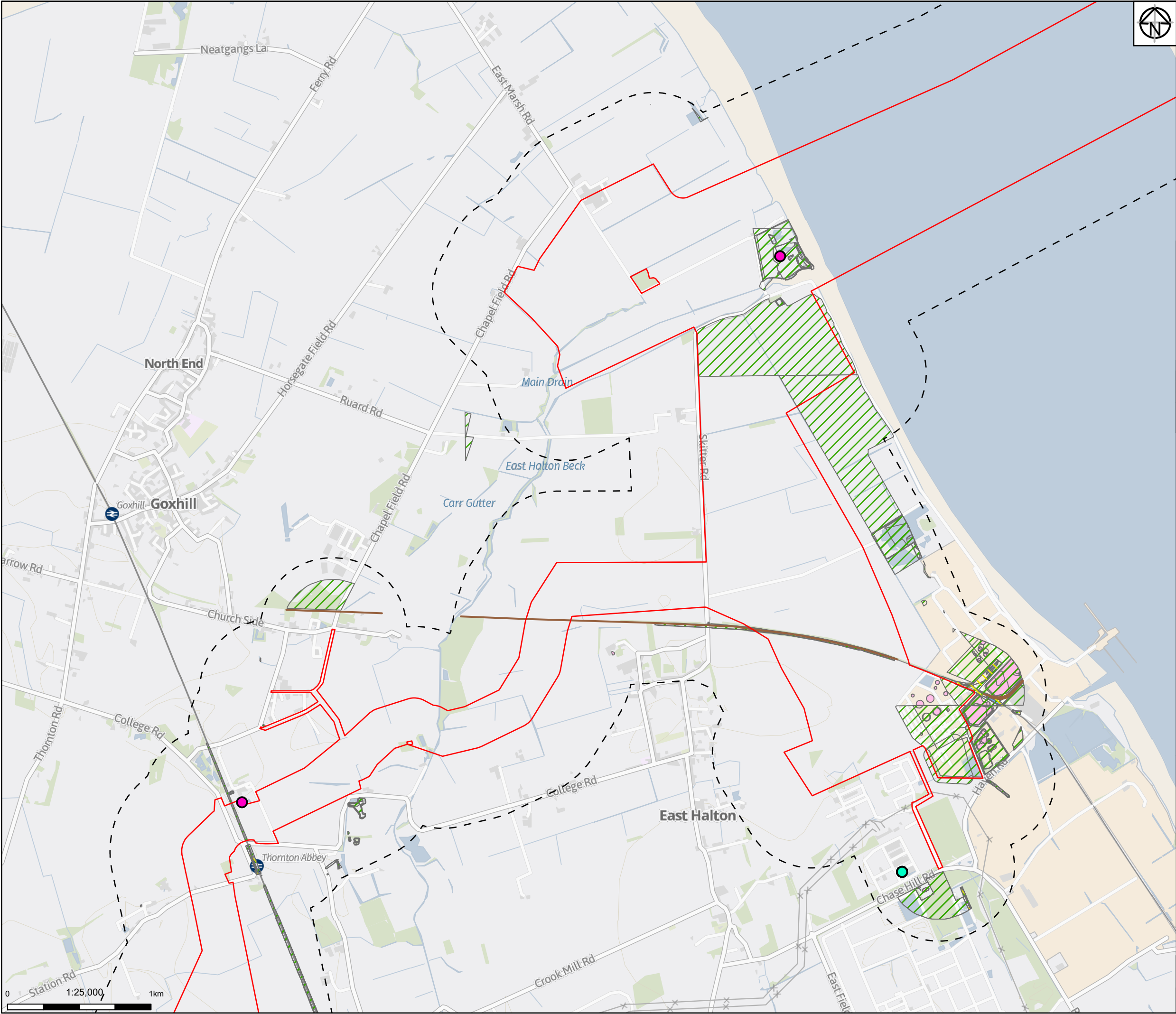
Designed	E. Richardson	Date 16 AUG 22	Signed
Drawn	K. Fischer	Date 16 AUG 22	Signed
Checked	E. Richardson	Date 16 AUG 22	Signed
Approved	K. Stubbs	Date 16 AUG 22	Signed
Scale:	1:25,000	Datum:	AOD
Original Size:	A3	Grid:	OS
Suitability Code:	S2	Project Number:	10047064

Suitability Description:

For Information

Drawing Number:
10047064-ARC-EGT-ZZ-DR-ZZ-00044-S2

Revision:
P01



Proposed Order Limits

Study Area (500m)

Brit Pits

Historical Licensed Industrial Activities

Historical Railways

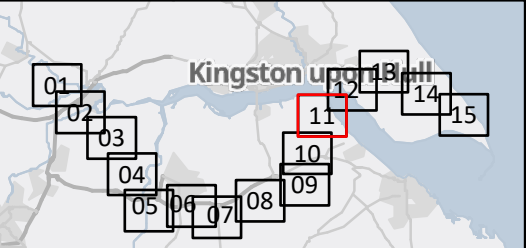
Historical Railway Features LD GS

Historical Railway Features HD GS

Historical Industrial Land uses GS

Historical Tanks GS

Notes:
Service Layer Credits: GB Background: Contains OS data © Crown Copyright and database right 2022
Contains data from OS Zoomstack



01	16/08/22	INITIAL ISSUE	KF	ER	KS
Rev	Date	Description	Drawn	Check	Approv

Client:

PROJECT:

HUMBER LOW CARBON PIPELINES

Site

Humber

Client

National Grid plc,
1-3 Strand,
London:
WC2N 5EH United Kingdom
Registered in England and Wales
No. 4031152
nationalgrid.com

Registered office:
80Fen
80 Fenchurch Street
London
EC3M 4BY

Coordinating Office:
Suite 1A
4 Piccadilly Place
Manchester
M1 3BN

www.arcadis.com

Title:

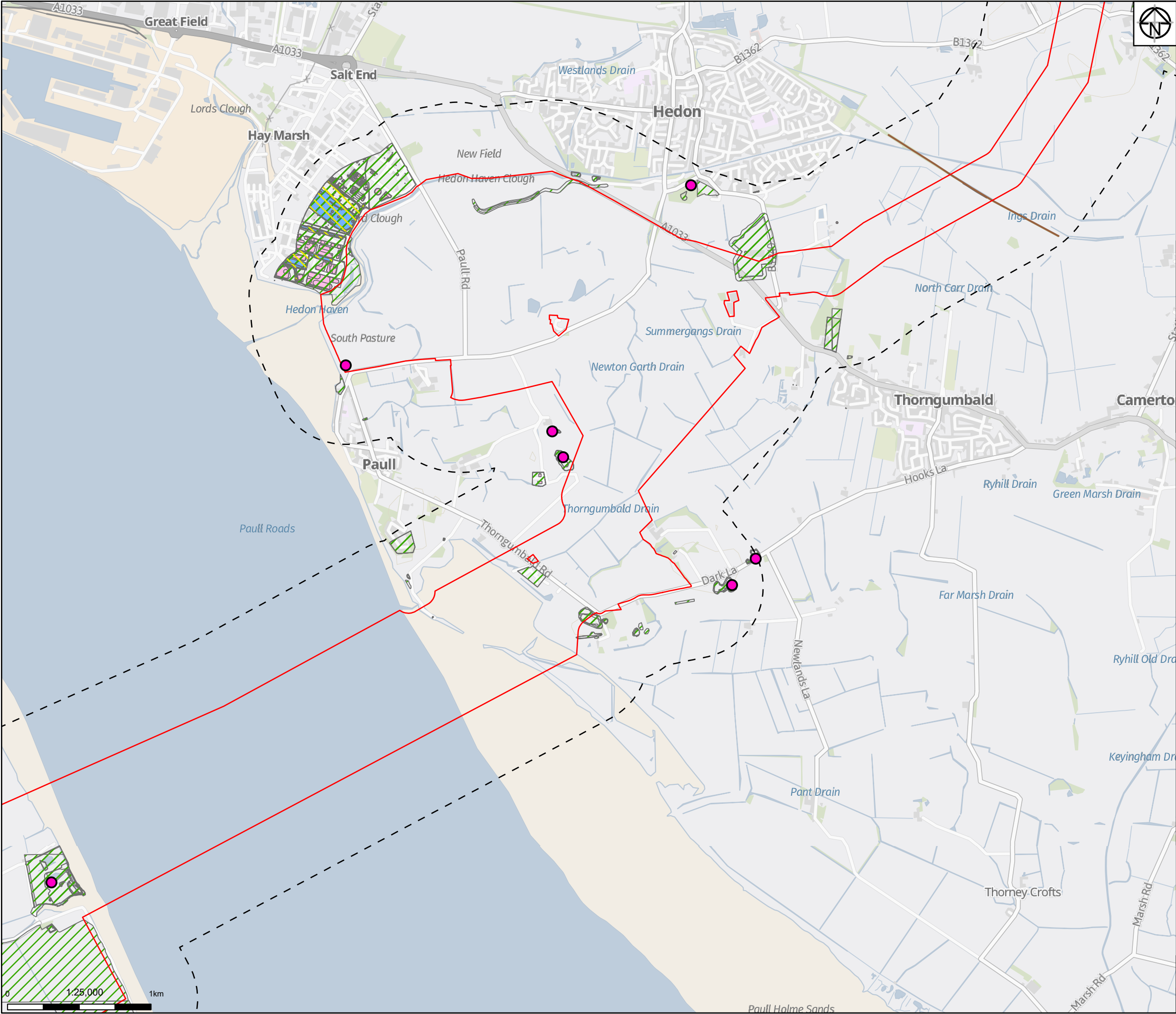
Figure 9.6
Historically Potentially
Contaminative Land Uses
Page 11 of 15

Designed	E. Richardson	Date	16 AUG 22	Signed	
Drawn	K. Fischer	Date	16 AUG 22	Signed	
Checked	E. Richardson	Date	16 AUG 22	Signed	
Approved	K. Stubbs	Date	16 AUG 22	Signed	
Scale:	1:25,000	Datum:		AOD	
Original Size:	A3	Grid:		OS	
Suitability Code:	S2	Project Number:		10047064	

Suitability Description:

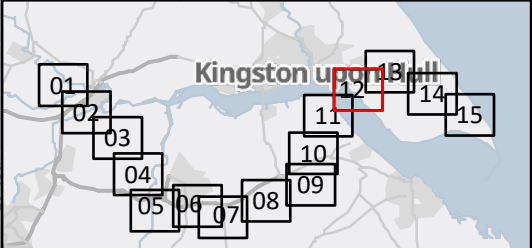
For Information

Drawing Number:	10047064-ARC-EGT-ZZ-DR-ZZ-00044-S2	Revision:	P01
-----------------	------------------------------------	-----------	-----



- Proposed Order Limits
- Study Area (500m)
- Brit Pits
- Historical Railways
- Historical Railway Features LD GS
- Historical Railway Features HD GS
- Historical Energy Feature GS
- Historical Industrial Land uses GS
- Historical Tanks GS

Notes
Service Layer Credits: GB Background: Contains OS data © Crown Copyright and database right 2022
Contains data from OS Zoomstack



01	16/08/22	INITIAL ISSUE	KF	ER	KS
Rev	Date	Description	Drawn	Check	Approv

Client:

PROJECT:
**HUMBER LOW
CARBON PIPELINES**

Site
Humber

Client
National Grid plc,
1-3 Strand,
London:
WC2N 5EH United Kingdom
Registered in England and Wales
No. 4031152
nationalgrid.com

Registered office:
80Fen
80 Fenchurch Street
London
EC3M 4BY

Coordinating Office:
Suite 1A
4 Piccadilly Place
Manchester
M1 3BN

www.arcadis.com

Title:

**Figure 9.6
Historically Potentially
Contaminative Land Uses
Page 12 of 15**

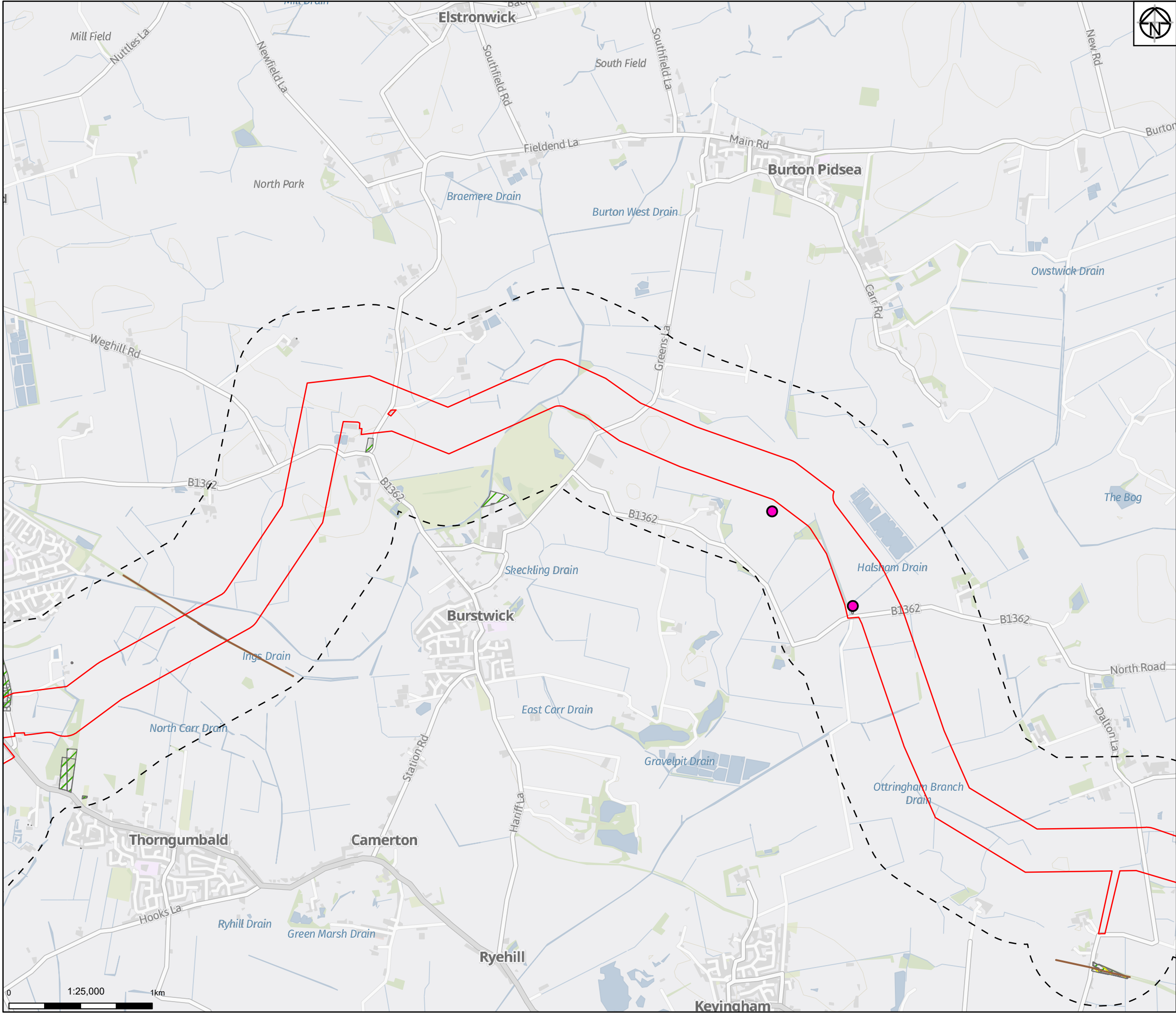
Designed	E. Richardson	Date 16 AUG 22	Signed
Drawn	K. Fischer	Date 16 AUG 22	Signed
Checked	E. Richardson	Date 16 AUG 22	Signed
Approved	K. Stubbs	Date 16 AUG 22	Signed
Scale:	1:25,000	Datum:	AOD
Original Size:	A3	Grid:	OS
Suitability Code:	S2	Project Number:	10047064

Suitability Description:

For Information

Drawing Number:
10047064-ARC-EGT-ZZ-DR-ZZ-00044-S2

Revision:
P01



Proposed Order Limits

Study Area (500m)

Brit Pits

Historical Railways

Historical Railway Features LD GS

Historical Railway Features HD GS

Historical Industrial Land uses GS

Historical Tanks GS

Notes

Service Layer Credits: GB Background: Contains OS data © Crown Copyright and database right 2022

Contains data from OS Zoomstack

Rev	Date	Description	Drawn	Check	Approv
01	16/08/22	INITIAL ISSUE	KF	ER	KS

Client:

PROJECT: HUMBER LOW CARBON PIPELINES

Site: Humber

Client: National Grid plc, 1-3 Strand, London: WC2N 5EH United Kingdom Registered in England and Wales No. 4031152 nationalgrid.com

Registered office: 80Fen, 80 Fenchurch Street, London EC3M 4BY

Coordinating Office: Suite 1A, 4 Piccadilly Place, Manchester M1 3BN

www.arcadis.com

Title:

Figure 9.6

Historically Potentially Contaminative Land Uses

Page 13 of 15

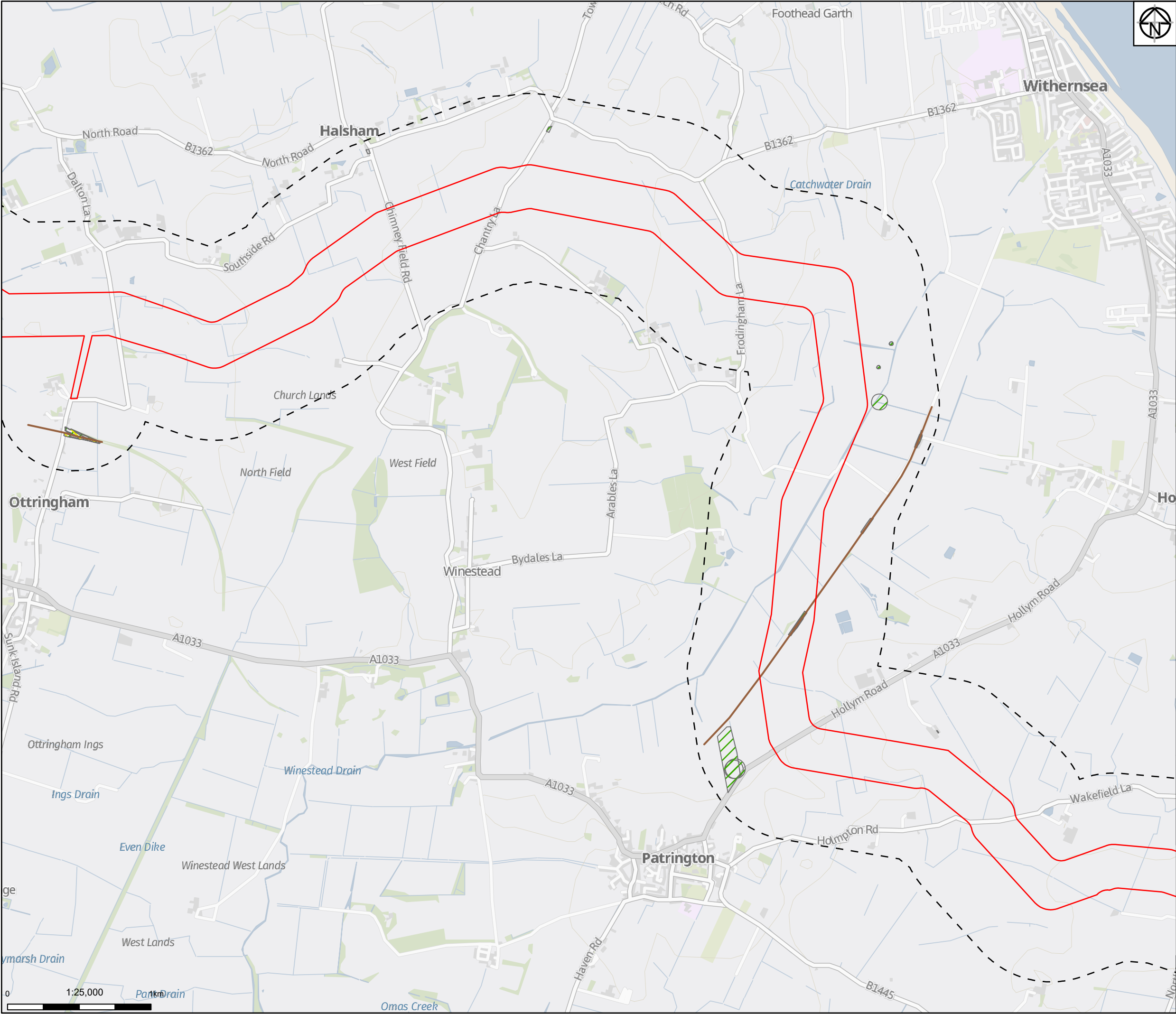
Designed	E. Richardson	Date	16 AUG 22	Signed	
Drawn	K. Fischer	Date	16 AUG 22	Signed	
Checked	E. Richardson	Date	16 AUG 22	Signed	
Approved	K. Stubbs	Date	16 AUG 22	Signed	
Scale:	1:25,000	Datum:	AOD		
Original Size:	A3	Grid:	OS		
Suitability Code:	S2	Project Number:	10047064		

Suitability Description:

For Information

Drawing Number: 10047064-ARC-EGT-ZZ-DR-ZZ-00044-S2

Revision: P01



Proposed Order Limits

Study Area (500m)

Historical Railways

Historical Railway Features LD GS

Historical Railway Features HD GS

Historical Industrial Land uses GS

Historical Tanks GS

Notes

Service Layer Credits: GB Background: Contains OS data © Crown Copyright and database right 2022

Contains data from OS Zoomstack

Rev	Date	Description	Drawn	Check	Approv
01	16/08/22	INITIAL ISSUE	KF	ER	KS

Client:

PROJECT:

HUMBER LOW CARBON PIPELINES

Site

Humber

Client

National Grid plc,
1-3 Strand,
London:
WC2N 5EH United Kingdom
Registered in England and Wales
No. 4031152
nationalgrid.com

Registered office:
80Fen
80 Fenchurch Street
London
EC3M 4BY

Coordinating Office:
Suite 1A
4 Piccadilly Place
Manchester
M1 3BN

www.arcadis.com

Title:

Figure 9.6
Historically Potentially
Contaminative Land Uses
Page 14 of 15

Designed	E. Richardson	Date	16 AUG 22	Signed	
Drawn	K. Fischer	Date	16 AUG 22	Signed	
Checked	E. Richardson	Date	16 AUG 22	Signed	
Approved	K. Stubbs	Date	16 AUG 22	Signed	
Scale:	1:25,000	Datum:	AOD		
Original Size:	A3	Grid:	OS		
Suitability Code:	S2	Project Number:	10047064		

Suitability Description:

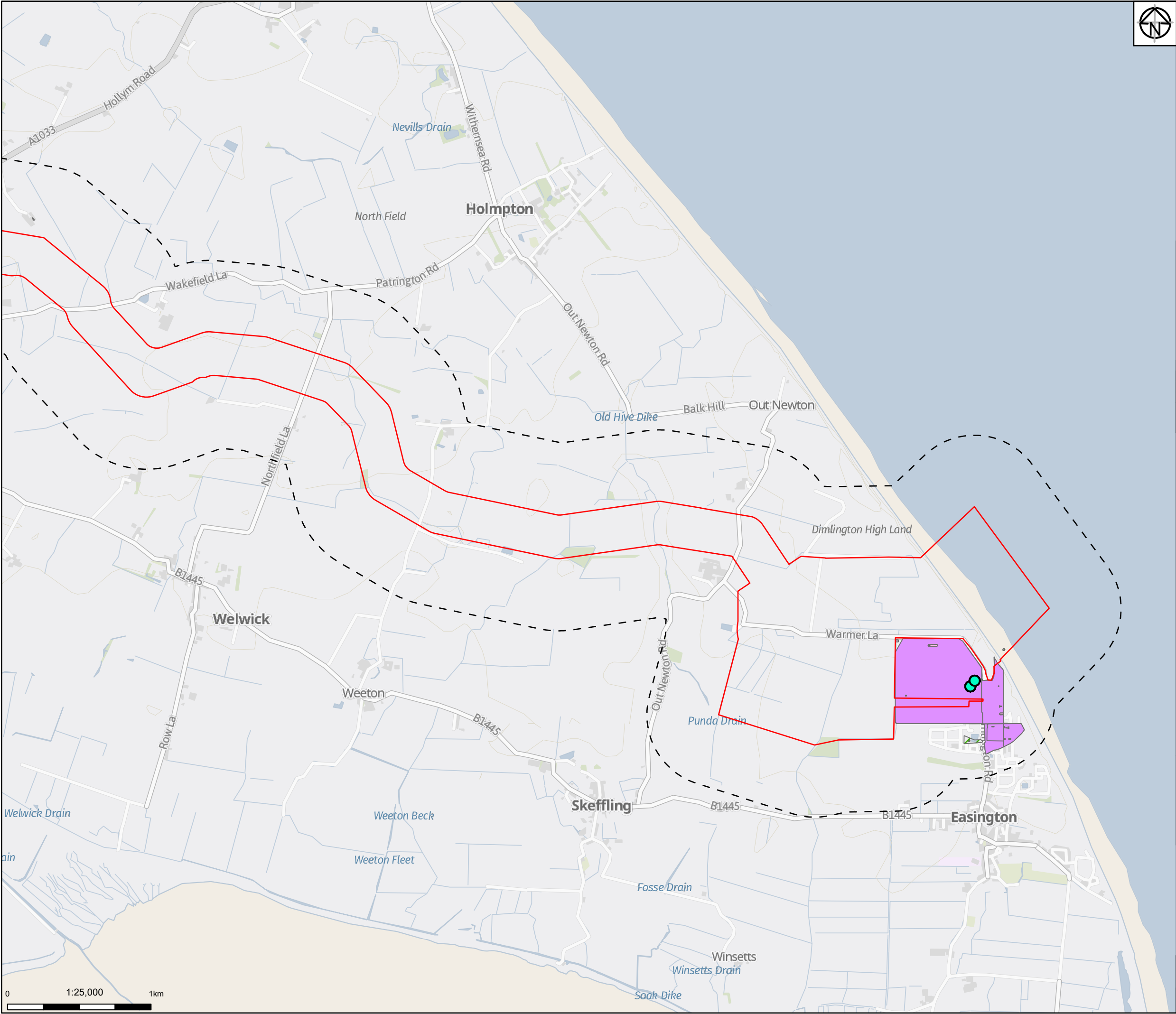
For Information

Drawing Number:

10047064-ARC-EGT-ZZ-DR-ZZ-00044-S2

Revision:

P01



Proposed Order Limits

Study Area (500m)

Historical Licensed Industrial Activities

Historical Energy Feature GS

Historical Industrial Land uses GS

Historical Tanks GS

Notes

Service Layer Credits: GB Background: Contains OS data © Crown Copyright and database right 2022
Contains data from OS Zoomstack

01	16/08/22	INITIAL ISSUE	KF	ER	KS
Rev	Date	Description	Drawn	Check	Approv

Client:

PROJECT:
HUMBER LOW CARBON PIPELINES

Site

Humber

Client

National Grid plc,
1-3 Strand,
London:
WC2N 5EH United Kingdom
Registered in England and Wales
No. 4031152
nationalgrid.com

Registered office:
80Fen
80 Fenchurch Street
London
EC3M 4BY

Coordinating Office:
Suite 1A
4 Piccadilly Place
Manchester
M1 3BN

www.arcadis.com

Title:

Figure 9.6
Historically Potentially
Contaminative Land Uses
Page 15 of 15

Designed	E. Richardson	Date	16 AUG 22	Signed	
Drawn	K. Fischer	Date	16 AUG 22	Signed	
Checked	E. Richardson	Date	16 AUG 22	Signed	
Approved	K. Stubbs	Date	16 AUG 22	Signed	
Scale:	1:25,000	Datum:	AOD		
Original Size:	A3	Grid:	OS		
Suitability Code:	S2	Project Number:	10047064		

Suitability Description:

For Information

Drawing Number:
10047064-ARC-EGT-ZZ-DR-ZZ-00044-S2

Revision:
P01